

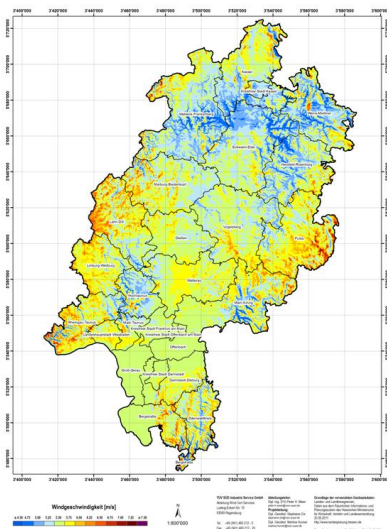
Press Release

Solid foundation for the expansion of wind power

13 December 2011

TÜV SÜD mapped the wind resource potential in Hesse

Munich/Wiesbaden. On behalf of the State Ministry of the Environment of Hesse, TÜV SÜD developed a wind map for the German state of Hesse. The wind map offers a high level of accuracy which makes it an important tool for identifying wind priority areas. Given this, the map provides a reliable set of data for the targeted expansion of wind energy.



This map of the wind resource potential enabled the state government of Hesse to supply the regional associations with an important planning tool. Standardized state-wide wind mapping gives regional planning authorities a basis for decision-making to identify areas which are particularly suitable for future wind-farm projects. "Our wind map is prepared in accordance with the state of the art and with the help of a special modelling program which supplies informative results even in complex terrain", explains Peter Herbert Meier, Head of Wind Assessments at TÜV SÜD Industrie Service GmbH. "The result is a comprehensive map of the wind

resource potential across the German state of Hesse that can be used in compliance with the provisions of Germany's Renewable Energy Sources Act (Erneuerbare-Energien-Gesetz, EEG)."

High precision and informative value

For wind mapping, Peter Herbert Meier and his team of meteorologists, physics, geographers and engineers collected and evaluated data of meteorological stations and wind measurements at existing wind farms. "We calculated the average wind speed at three hub heights", explains Meier. The average wind speed at a specific site is critical for the suitability of an area or location as a wind farm site. In contrast to other wind maps, the TÜV SÜD experts validated



the complex 3D model with real data from existing wind farms. According to the experts, by choosing this approach they succeeded in significantly improving the accuracy and informative value of the map.

TÜV SÜD Industrie Service GmbH has long-standing experience with wind power utilization – from type certification of onshore and offshore wind farms to feasibility studies, wind measurements and even one-stop support for complete wind-farm projects – and holds all the required national and international accreditations. "We are very happy that we won this challenging contract to draw up a wind map for Hesse", says Peter Herbert Meier. "It permits us to build on our successful work in Baden-Wuerttemberg, where we developed a state-wide wind atlas on behalf of the Ministry of the Economy."

Further information about the map of wind resource potential in Hesse can be found on the web site of the Hessian Ministry of the Environment, Energy, Agriculture and Consumer Protection at


www.hmuelv.hessen.de

For further information about the wind power services provided by TÜV SÜD visit www.tuev-sued.de/windenergie

Note for editorial staff: The photos of the wind map and Peter Herbert Meier can be downloaded in printable resolution from the "Current Press Photos" category www.tuev-sued.de/pressefotos.

Media Relations:

Dr Thomas Oberst TÜV SÜD AG Corporate Communications INDUSTRY Westendstr. 199, 80686 Munich	Tel. +49 (0) 89 / 57 91 – 23 72 Fax +49 (0) 89 / 57 91 – 22 69 E-mail thomas.oberst@tuev-sued.de Internet www.tuev-sued.de
---	---

 TÜV SÜD Industrie Service GmbH supplies engineering, testing and inspection and consulting services for manufacturers and operators of process-engineering plants, buildings and infrastructural facilities. Additionally the 2,400 employees offer consulting services for the planning and construction phases and provide support in optimizing and safeguarding smooth operation right down to dismantling and disposal.

TÜV SÜD is a leading international service organization catering to the strategic business segments INDUSTRY, MOBILITY and CERTIFICATION. Over 16,000 employees are represented at more than 600 locations throughout the world. Optimizing technology, systems and know-how, the interdisciplinary specialist teams act as process partners to strengthen their customers' competitiveness.